

**Moor Mead Road
St Margarets Village
TW1 1JS**

£1,300,000

ChaseBuchanan



Moormead Road TW1

Approximate Gross Internal Floor Area = 147.0 sq m / 1582 sq ft

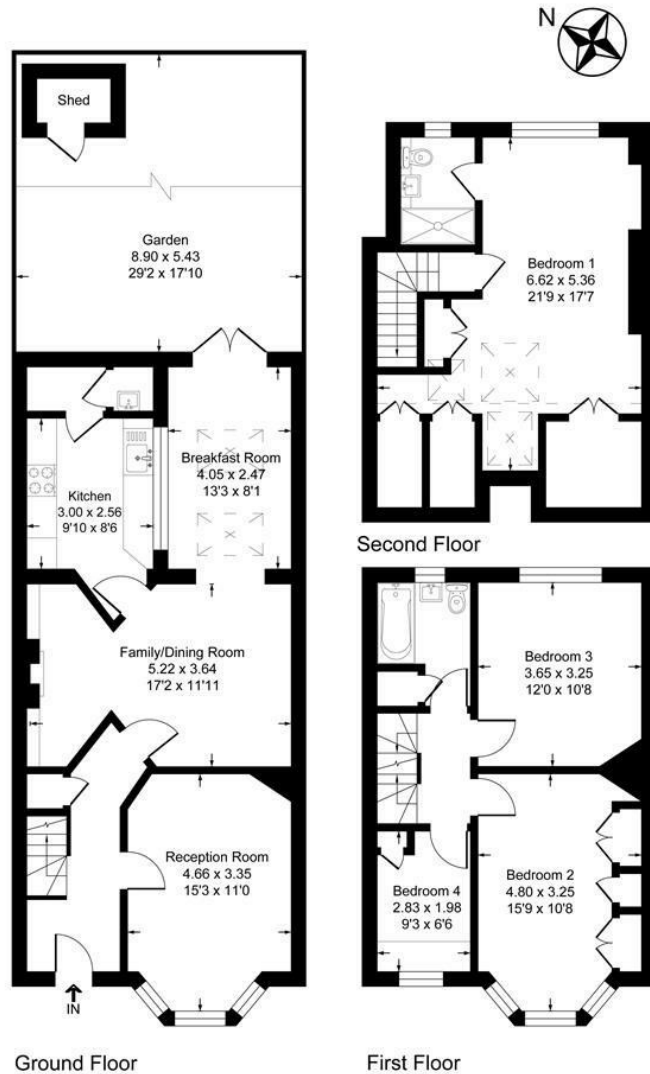
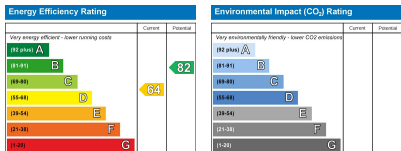


Illustration for identification purposes only, measurements are approximate, not to scale.



Care has been taken in the preparation of these particulars, however, their accuracy is not guaranteed and they do not form part of any contract. Measurements stated must be considered maximum.

- Four good size bedrooms
- Two modern bathrooms
- New Lighting
- Idyllic village location overlooking Moor Mead Park
- Three stunning reception rooms
- New Boiler and Water System
- Three Unique Gardens
- No Onward Chain

Located in this idyllic position overlooking Moor Mead Park, this well-appointed Edwardian four bedroom family home with many original features and positioned in a quiet cul de sac location in the heart of St Margarets Village, and within walking distance to St Margarets and Twickenham mainline station and all local amenities.

The accommodation is arranged over three floors. The ground floor comprises: a formal reception room; a second reception room that is open plan; a fitted John Lewis kitchen with a new induction hob, leading to a larder and W.C, a light and airy breakfast/dining room that opens onto the rear garden which includes new decking and rear access.

The first floor has two double bedrooms, one single bedroom and a modern bathroom with new shower fittings and a new boiler and water system.

The top floor has a further double bedroom and an en suite shower room.

Externally there is an attractive low maintenance paved courtyard garden and unusually two mature front gardens, one of which backs onto Moor Mead Park and its tennis courts. The property also benefits from no onward chain.

An appointment to view a property in this idyllic location is highly recommended via the vendor's sole agent Chase Buchanan.

For more information or to book a viewing, please contact:

020 8744 2434

ChaseBuchanan

124 St Margarets Road, St Margarets, TW1 2AA